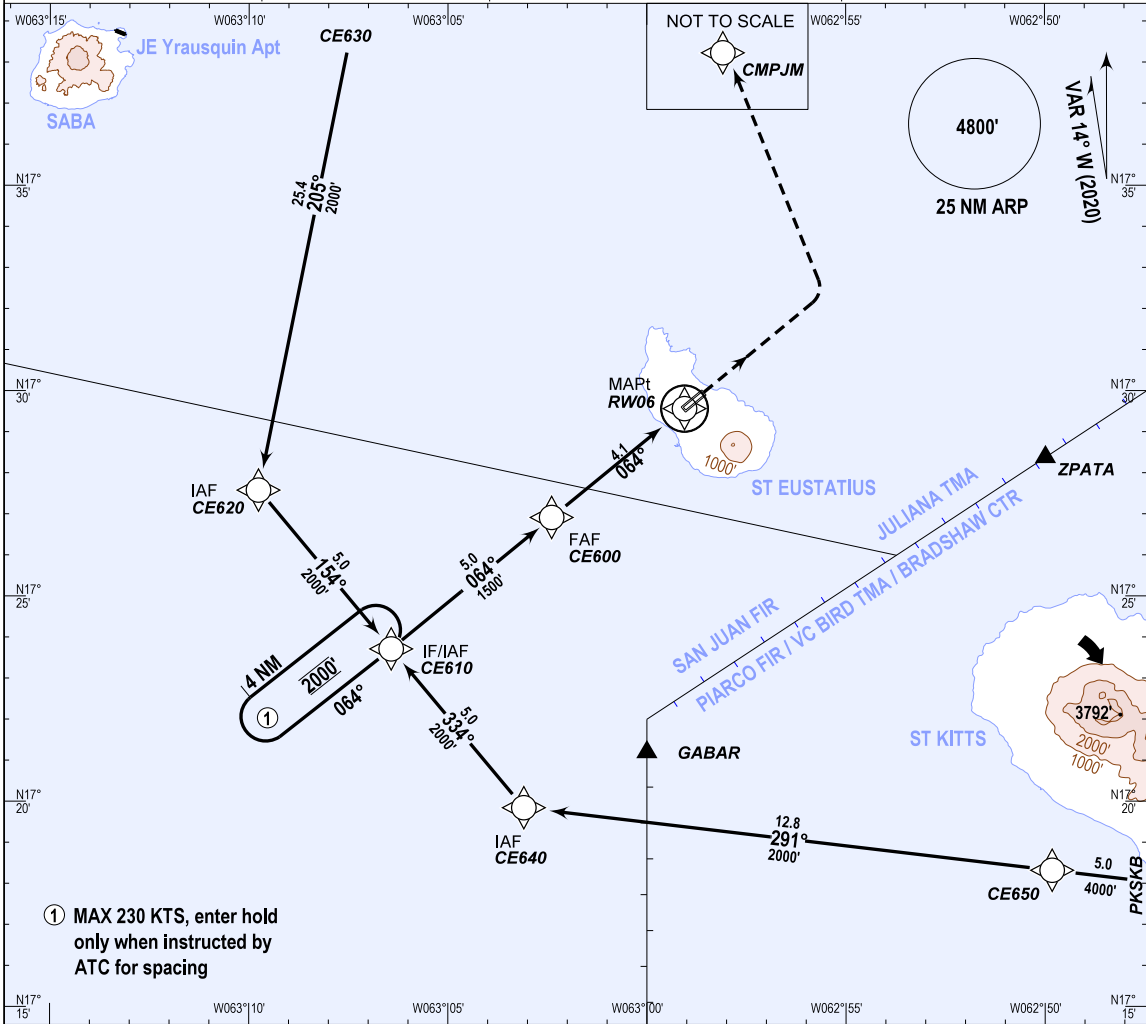
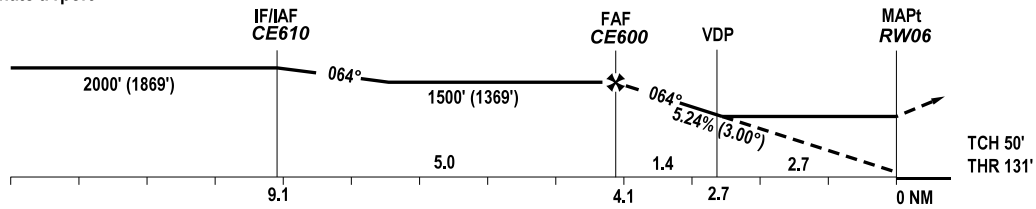


INSTRUMENT APPROACH CHART - ICAO	AD ELEVATION: 131' TRANS LEVEL: FL65 TRANS ALT: 5000'	JULIANA APPR 128.95 (PRIMARY) JULIANA TWR 118.7 (SECONDARY) STATIA AFIS 118.10	RNAV (GNSS) RWY 06 FD ROOSEVELT APT (TNCE) ST EUSTATIUS
---	--	---	--



① MAX 230 KTS, enter hold only when instructed by ATC for spacing

MISSED APCH: Climb on rwy track to 2000', then climbing left turn to 3000' direct CMPJM, or as directed by ATC.
MISSED APCH WITH COMM FAILURE: Same as above. Reaching CMPJM execute available approach to TNCE or proceed to alternate airport.



OCA(H)	A	B	C	GROUNDSPEED - DESCENT RATE						
				KNOTS	70	90	100	120	140	160
LNAV/VNAV	850' (719')	870' (739')	900' (769')							
LNAV	1040' (909')	1040' (909')	1040' (909')							
CIRCLING north side only	1250' (1119')	1250' (1119')	1350' (1219')	FT/MIN	372	478	531	637	743	849

CHANGES: Editorial.

- GNSS required. DME/DME not authorized.
- PJM VOR/DME is not part of procedure and is not required.
- Visual descent point (VDP) is where LNAV OCA intersects 3° descent slope.
- Bearings are magnetic, altitudes and elevation in feet, heights are relative to AD elevation, distance in NM.
- Waypoint PKSKB is coincident with SKB NDB.
- Waypoint CMPJM is coincident with PJM VOR.
- Waypoint CE630 is coincident with PJM VOR R-180 10 DME.

